



Kaser

Net'sGo Operation Guide



2010/12/29

<http://www.kasernet.com/>

Table of Contents

- Device Illustration-----P3
- Finger Touch Operation-----P4
- Home Screen Illustration-----P5
- Apps Drawer-----P6
- Move Apps from Drawer to Home Screen-----P7
- Remove Apps Icon from Home Screen-----P8
- Pull Down and Retreat the Status Bar-----P9
- Widget Chooser-----P10
- Listing of Launched Apps-----P11
- Volume Control-----P12
- Changing Input Method-----P13

Kaser Net'sGo Control Buttons

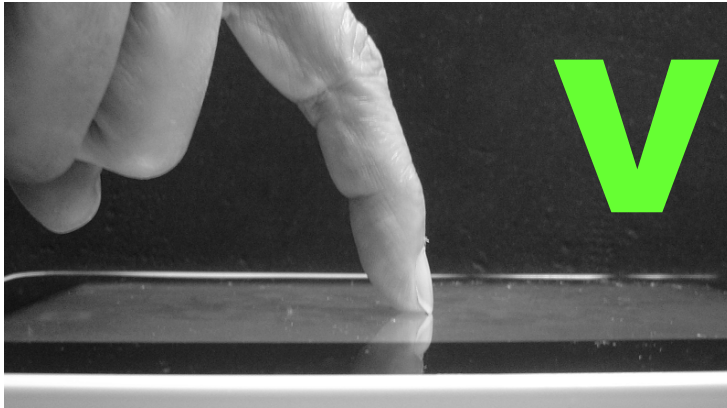


- 1** Press and hold 3 seconds to “Power On”, press and hold 14 seconds to “Power Off”, Press once to Suspend
- 2** Press to bring up “Menu”
- 3** Press to go to “Home” screen, Press and hold to bring up a list of opened applications
- 4** Press to go “Back” to previous screen
- 5** Touch & hold an empty spot to add a shortcut to an application, a widget, and so on

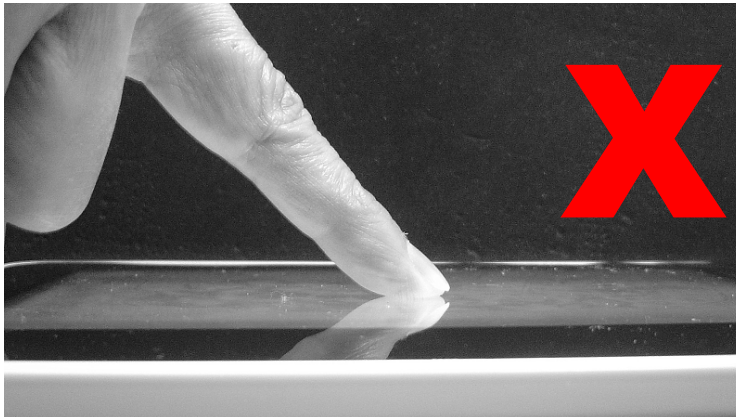


Net'sGo Basics (1)

How to Use Resistive Touch Panel:



The display surface of Net'sGo uses Resistive Touch Panel technology which allows materials such as finger nail, stylus, or pen to touch and to move on the surface.

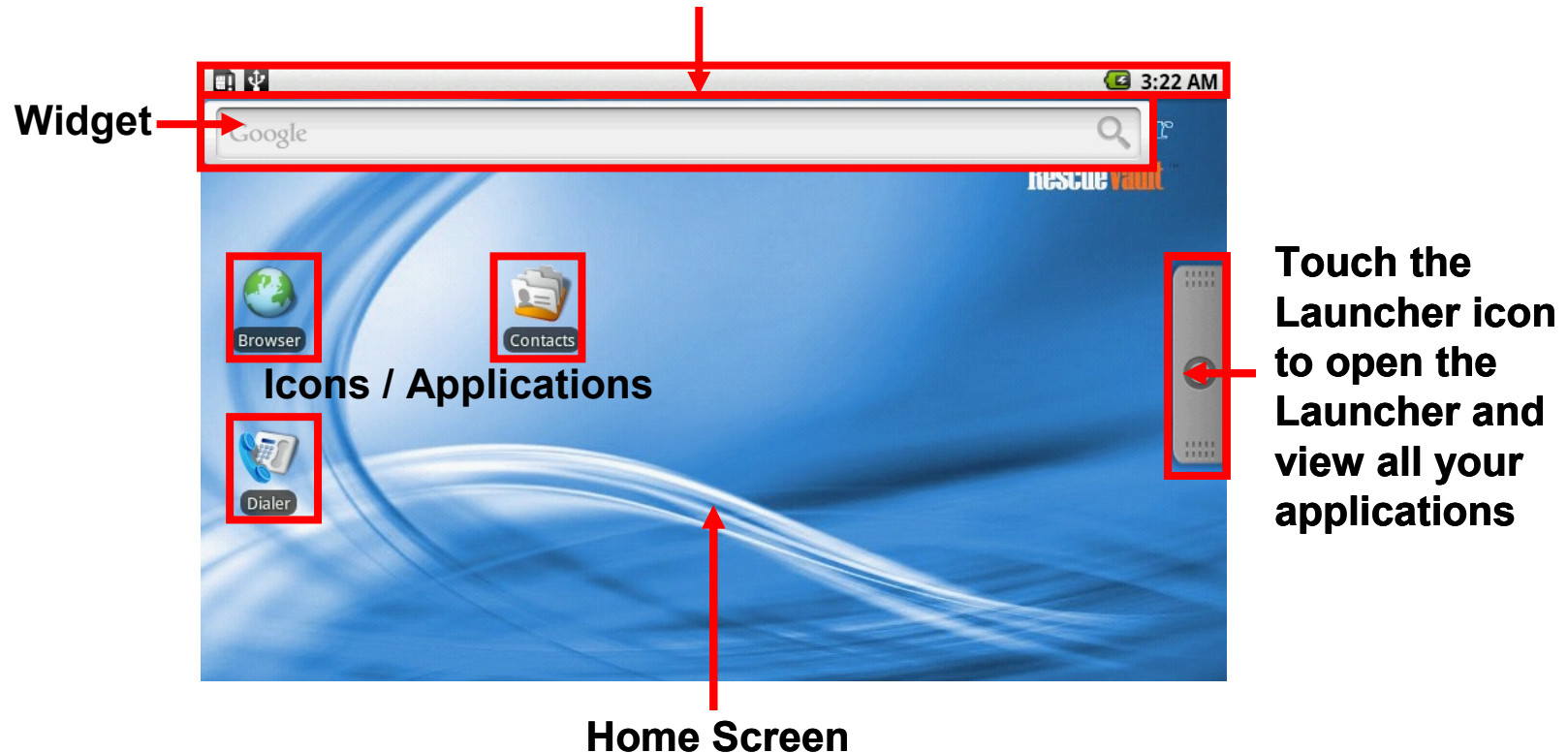


To ensure the smooth operation on the Touch Screen, it is recommended **NOT** to use the skin area of your finger to point and to move the object on the screen.

There will always be a zoom In and Out appears on the lower right corner of the screen when you read a text file or view a photo.

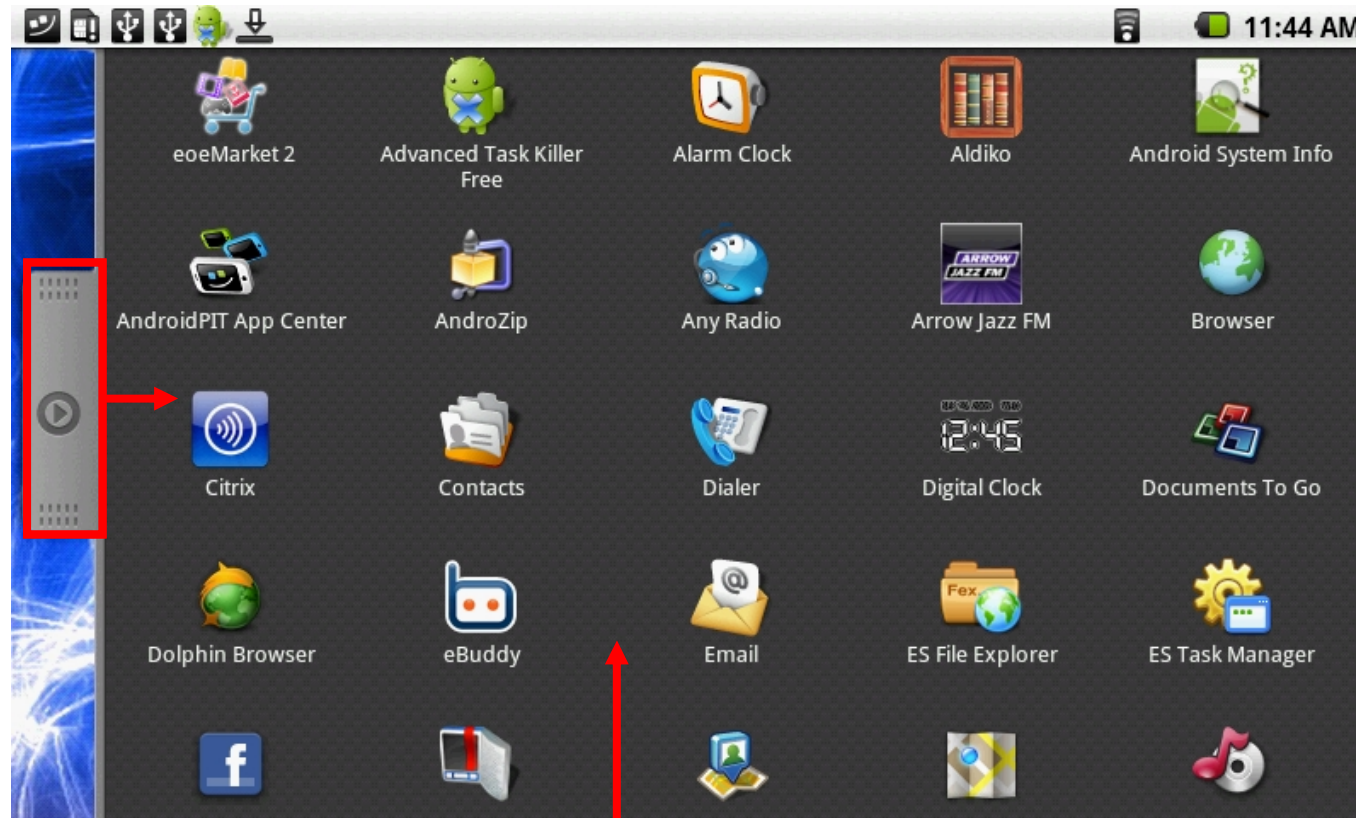
Net'sGo Basics (2)

Status Bar shows the time, signal strength, battery status, download, ...etc. It can be pulled down to view the details.



Net'sGo Basics (3)

**Touch the
Launcher icon
to retreat the
Launcher and
back to Home
screen.
Or
Press the
“Back” button
to go back to
Home screen.**

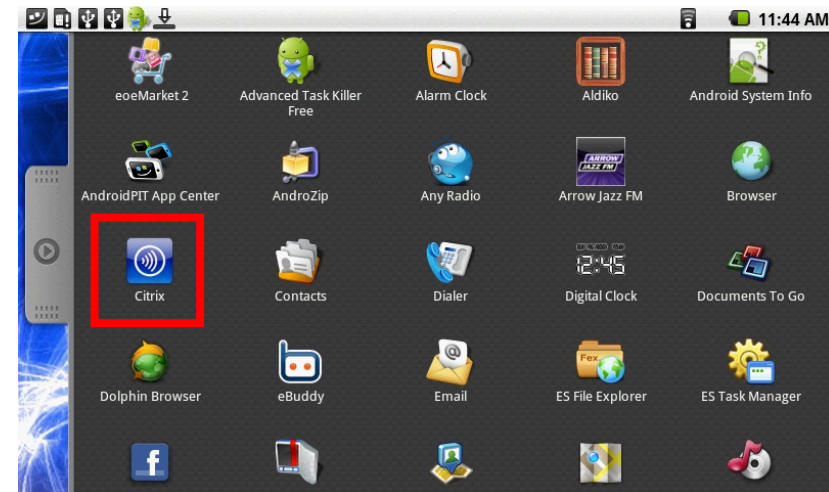
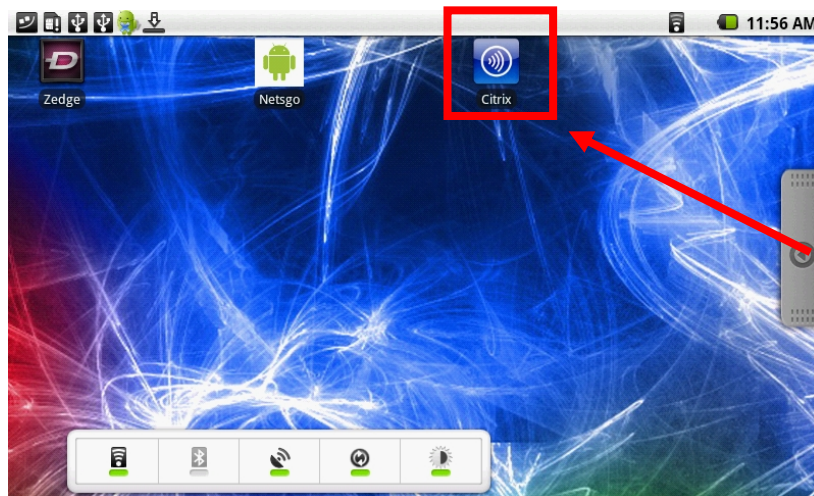


Launcher Screen

Net'sGo Basics (4)

Move the frequently used Applications to Home Screen

**Press and
hold this Icon**

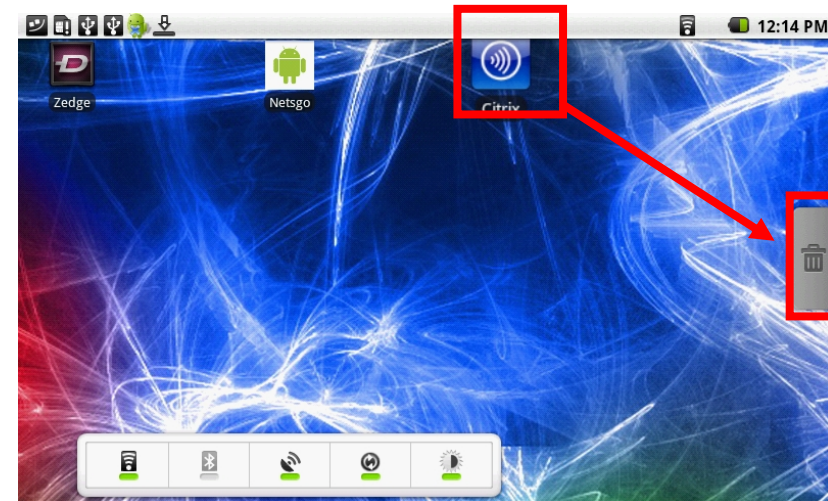
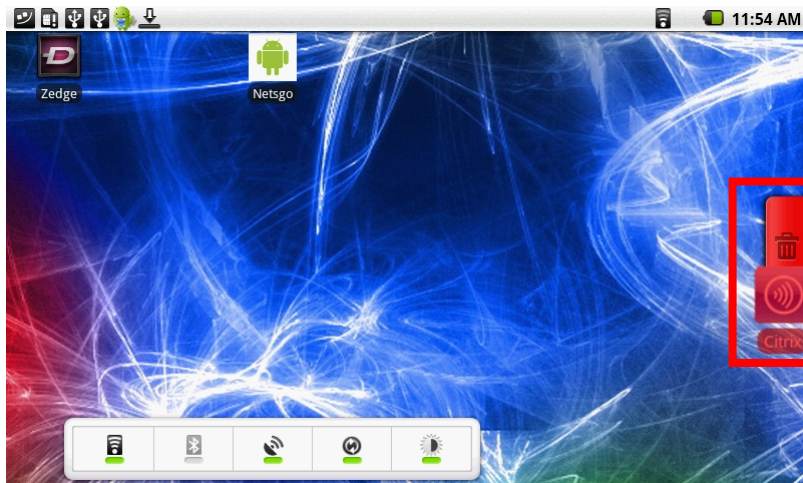


**Move the Icon to the
preferred position**

Net'sGo Basics (5)

Delete un-wanted Icons / Widgets from Home Screen

Press and hold the Icon, the Launcher button will turn into a Trash can

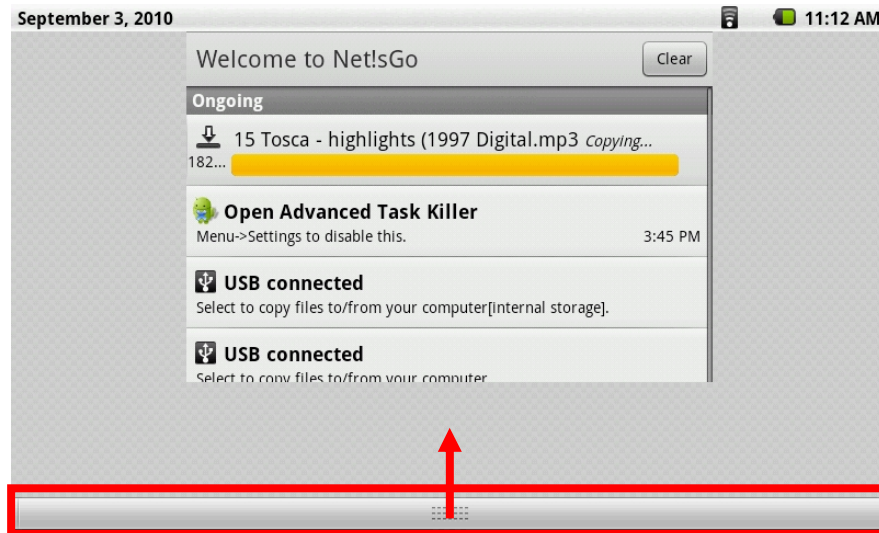
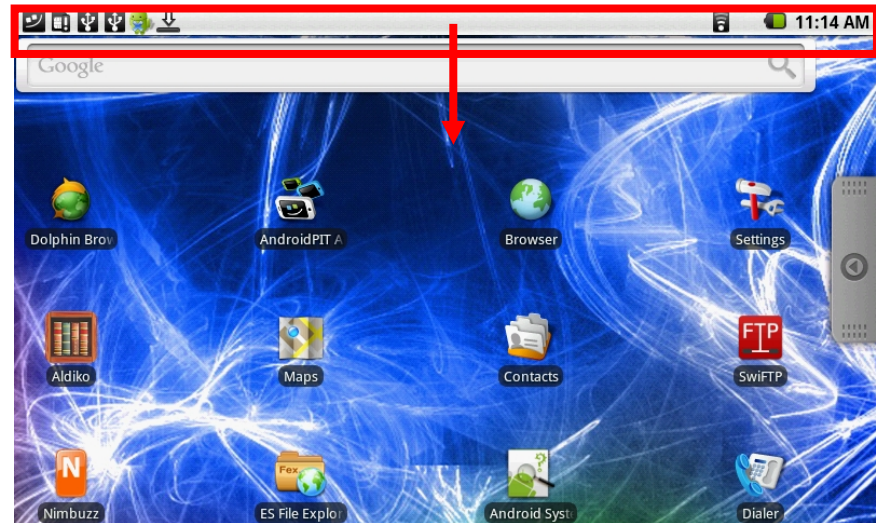


Move the Icon and drop to Trash can

Net'sGo Basics (6)

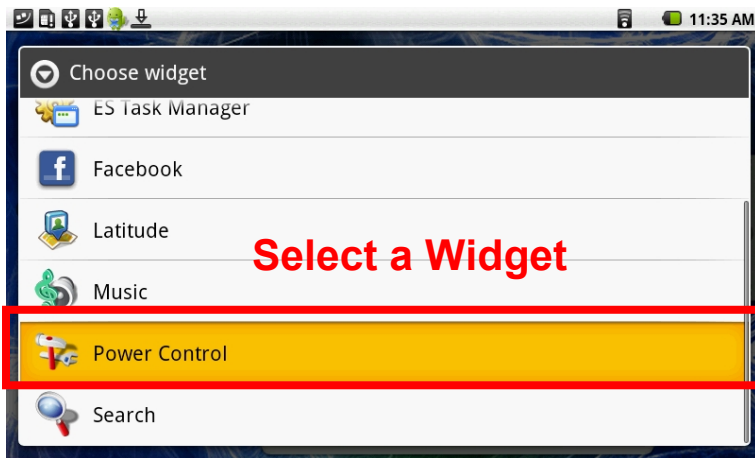
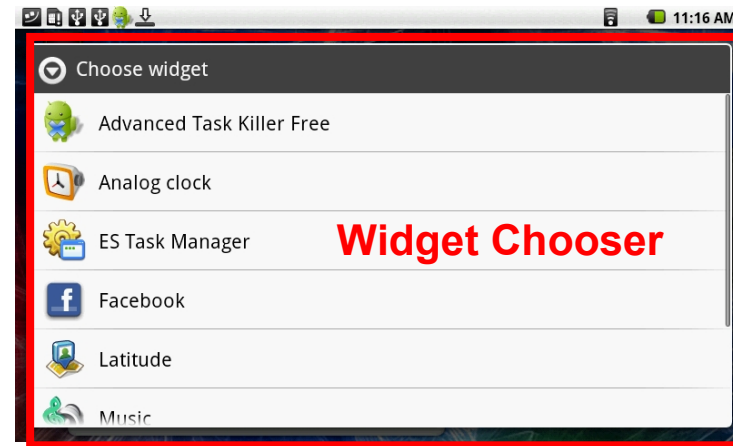
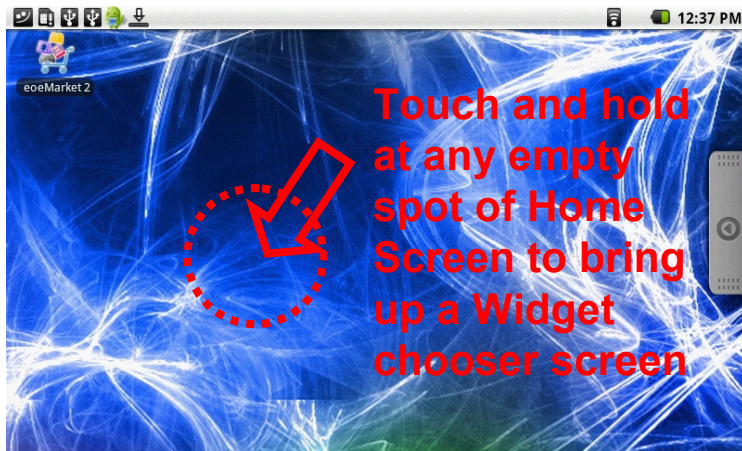
Pull-down and Retreat the Status Screen

Press and hold the marked area, then drag down the Status screen



Press and hold at the marked area, then drag up to retreat the Status screen

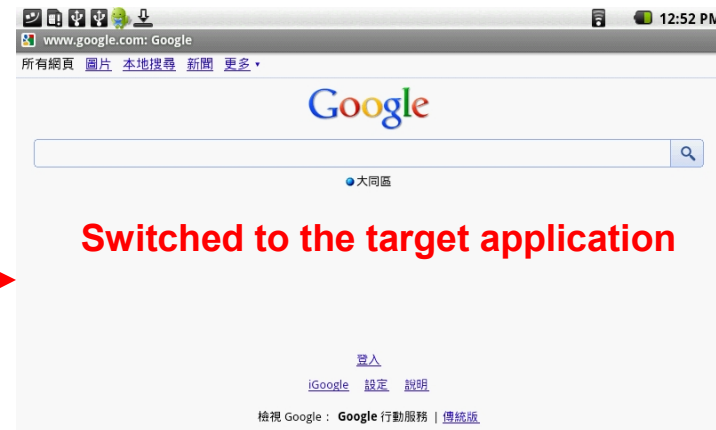
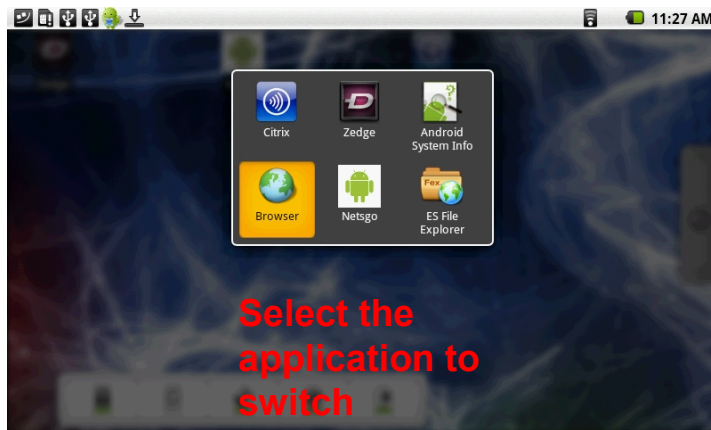
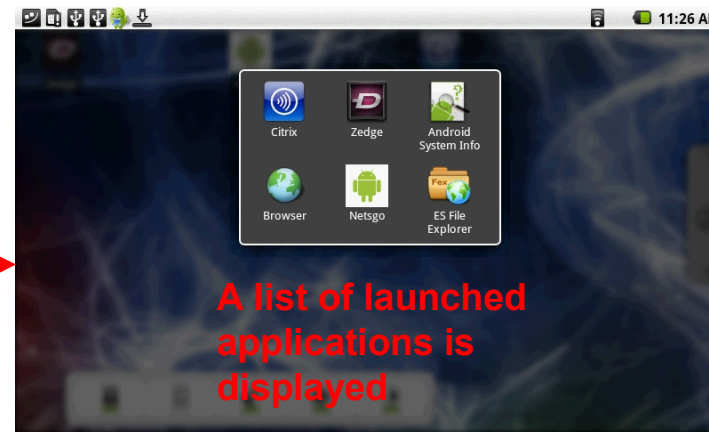
Net'sGo Basics (7)



Net'sGo Basics (8)

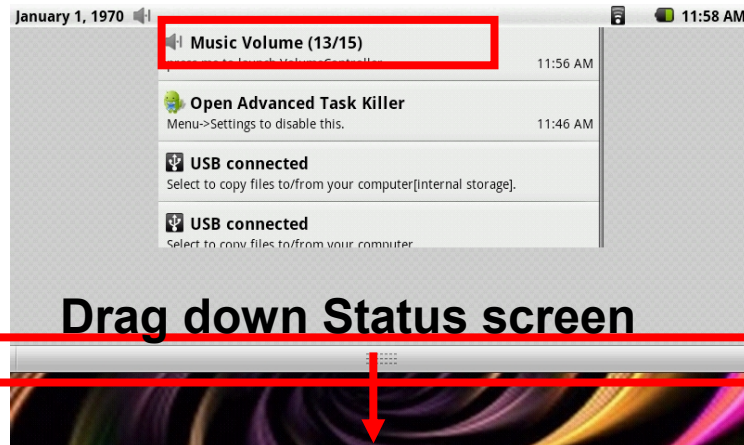


Press and hold to bring up a list of launched applications



Volume Control (9)

Press Volume Control to bring up setting screen

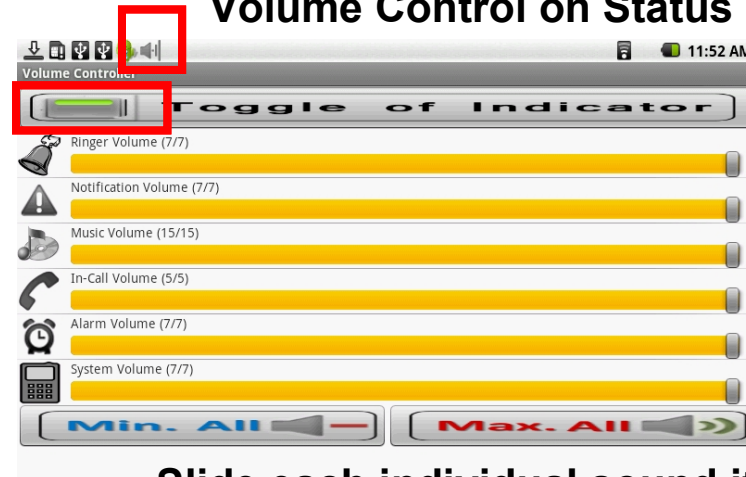


Drag down Status screen



Toggle is Off

Press Toggle to turn On or Off Volume Control on Status Screen



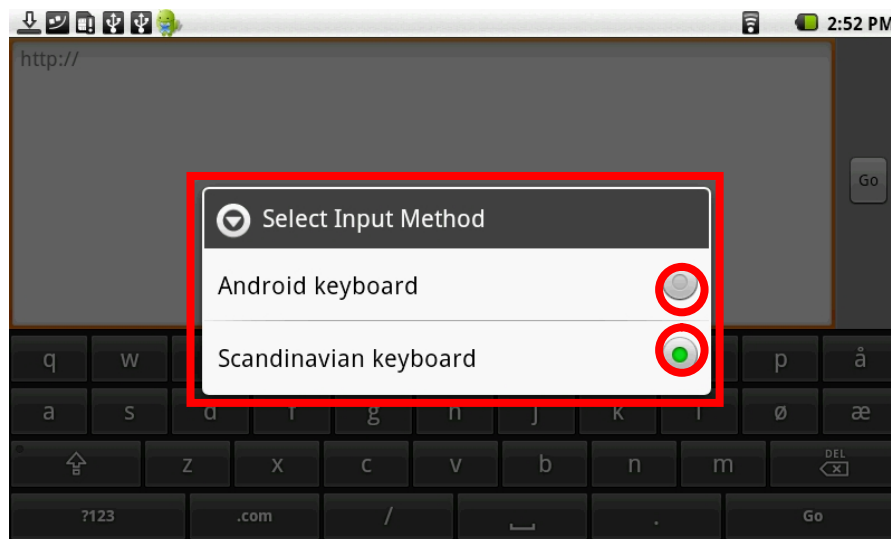
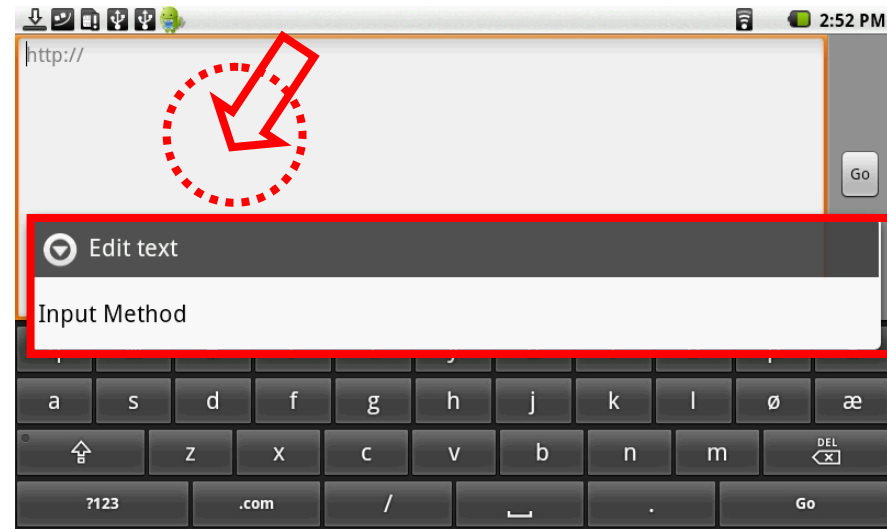
Slide each individual sound item to get the desired volume



Press to Minimize or Maximize all sound item

Changing Input Method (10)

Touch and hold at any empty spot of Input Area to bring up a Input Method chooser screen



Select the desired Input Method / Keyboard.

Check the “Settings” to enable additional keyboard options if you can’t find the optional Input Method beside the default Android keyboard.